

What's on in St Helens

Summer 2 Half Term 2025



ADDvanced Solutions
Community Network
Supporting you to find the answers



ADDvanced Solutions Community Network

is an open access offer that supports the emotional health and wellbeing of neurodivergent children and young people, their families and the professionals that work with them. Below you will find the learning programmes and workshops for St Helens families. No diagnosis or referral is needed to access the offer.



**Learning
Programmes**
page 3 & 4

[Find out more](#)



**Community
Network Groups**

[See below](#)



**Online Learning
Opportunities**
page 2

[Find out more](#)

St Helens Community Network Group: Every Tuesday afternoon during term time

An informal, open access learning opportunity to seek advice and support around challenges at all stages of your journey. No need to book, just come along, to meet the team and visiting professionals.

Time: 12:30pm – 2:30pm

Venue: Wonderland Community Centre

Unit 4 Reflection Court, Canal Street. WA10 3JQ.

The community centre is a 10 minute walk from St Helens Central train station and St Helens bus station. It is located opposite the Chapel House car showroom.

[Get directions](#)



Topics this half term:

Tuesday 3rd June	Managing Stress
Tuesday 10th June	Supporting Transition
Tuesday 17th June	SEND Jargon Buster
Tuesday 24th June	in partnership with Signs of a Rainbow
Tuesday 1st July	Sensory Processing Difficulties
Tuesday 8th July	Preparing for the Summer Holidays

Online Learning Opportunities



We offer several opportunities for parents and carers to access our offer online if this is your preference. Weekly Community Network Groups, termly workshops and also our Learning Programmes are delivered in a webinar format via Zoom for Healthcare. Please register in advance to attend.



[View our online calendar here or via the QR code](#)

ONLINE COMMUNITY NETWORK GROUP

Monday mornings

9.30am – 11.00am

[Click here to register](#)

Monday 2nd June	Signs of a Rainbow joining us to share the support they can offer families.
Monday 9th June	Autism and Girls
Monday 16th June	Supporting Transition
Monday 23rd June	Tantrums vs Meltdowns
Monday 30th June	Understanding Phobias
Monday 7th July	Preparing for Summer Holidays

ONLINE COMMUNITY NETWORK GROUP

Wednesday evenings

5.00pm – 6.30pm

[Click here to register](#)

Wednesday 4th June	Supporting Transition
Wednesday 11th June	Understanding and Supporting Behaviours that Challenge
Wednesday 18th June	Neurodiversity and Mental Health
Wednesday 25th June	Supporting Organisational Skills
Wednesday 2nd July	Signs of a Rainbow joining us to share the support they can offer families.
Wednesday 9th July	Preparing for Summer Holidays

Online 'Demand Avoidance' Workshop

An extended webinar workshop, exploring Autism with a Demand Avoidant Profile and strategies to support autistic children and young people presenting with varying degrees of demand avoidance.

Friday 6th June – 9.30am – 12.00pm

[Click here to register](#)



'Preparing for the future' Online Workshop

Pathway to inclusion and being part of own community

An extended webinar workshop, exploring how we can support neurodivergent young people to be included in the local community as they approach adulthood. Designed to compliment our Preparing for the future Learning Programme, see page 3)

Tuesday 24th June – 6.30pm – 8.30pm

[Click here to register](#)



Online community network groups and learning workshops provide parents and carers with an understanding of a particular topic around neurodevelopmental conditions. We provide strategies to support children and young people at home and in school, with an opportunity to interact with our team via the chat and Q&A function. If you are using a phone, you will need to download the Zoom app beforehand. Please be mindful of your data usage. If you do not have an unlimited data plan, you may need to connect to a Wi-Fi connection to prevent charges.



Learning Programmes for St Helens parents and carers

We offer learning programmes in St Helens to support parents and carers to understand and meet the needs of their neurodivergent children and young people, pre, during and post diagnosis.

[View our online calendar here or via the QR code to find the latest available dates](#)



Neurodevelopmental Conditions Learning Programme

This programme equips parents and carers with a greater understanding of neurodevelopmental conditions, specific learning difficulties and associated mental health needs and equips them with practical strategies that support the difficulties that may present, including:

- **Neurodevelopmental Conditions – including Autism, ADHD, Sensory Processing Difficulties, Specific Learning Difficulties.**
- **Managing everyday challenges and behaviours – including sleep, toileting and eating difficulties.**
- **Your Local Offer, disability welfare rights and SEND, Early Help and Education Health Care Plans.**

No referral or diagnosis is needed

[Click here for latest dates to attend face to face or online](#)

Preparing for the Future Learning Programme

Offering parents and carers, in St Helens, Knowsley and Warrington, learning opportunities to understand and better support neurodivergent young people aged 11+ as they .

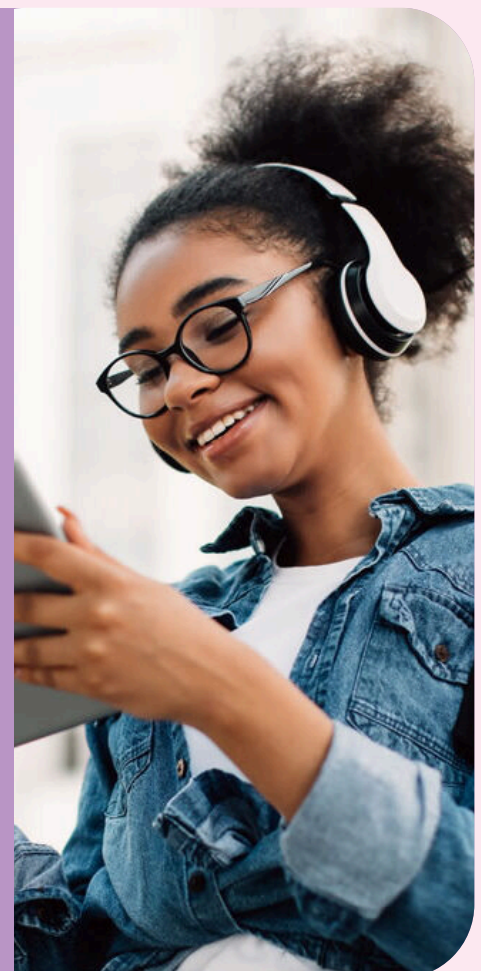
This is a structured, 6 session learning programme, delivered face to face or online, supporting parents and carers as their young person approaches adulthood:

- **Independent living**
- **Community inclusion**
- **Relationships**
- **Good health and wellbeing**
- **Exploring local provision and services for young people**
- **Planning for transition**
- **Supporting independence**
- **Reasonable adjustments and SEND**
- **Further education and employment**

Online – across 6 evening sessions via Zoom

Wednesday 4th June 6.30pm – 8.30pm
Monday 9th June 6.30pm – 8.30pm
Wednesday 11th June 6.30pm – 8.30pm
Monday 16th June 6.30pm – 8.30pm
Wednesday 18th June 6.30pm – 8.30pm
Monday 23rd June 6.30pm – 8.30pm

[Book Now](#)



Autism Learning Programme

The Autism Learning Programme has been designed to support and empower parents and carers in their understanding of how autism is experienced by children and young people, providing learning, guidance and strategies to better support your child/young person. The programme is commissioned by NHS MerseyCare for St Helens parents and carers. Although priority will be given to parents and carers whose child has received an autism diagnosis, those on the pathway are also able to attend if places are available.

Across 3 Wednesdays – 9.30am – 2.45pm
4th, 11th and 18th June 2025

Please contact us to book your free place – venue to be confirmed.

Call our office on **01744 582172**, email us on **info@advancedsolutions.co.uk** or

[Register here](#)



Professionals Neurodevelopmental Conditions Awareness Raising Training

Wednesday 18th June – 9.15am – 4.00pm – St Helens – venue to be confirmed.

Designed to improve professionals' understanding of neurodevelopmental conditions (NDCs), how they may present and how one condition may overlap with another. Professionals attending this training will develop knowledge, skills and confidence to better support neurodiverse children, young people and their families:

- **Understand the differences between and the typical behaviours of ADHD, Autism, and other NDCs**
- **Recognise the impact that unsupported and unmanaged NDCs can have on an individual and their family**
- **Understand the impact that sensory processing difficulties can have on children and young people**
- **Identify local support available for professionals, children, young people and their families.**

If you are interested in this full day's training, please call the office on **01744 582172** or email **info@advancedsolutions.co.uk**.



St Helens Schools – Professionals online training workshops

Free online training sessions for any staff of St Helens secondary schools, topics this half term is:

Creating a Sensory Friendly Environment – Tuesday 24th June – 3.30pm – 5.30pm

[Book Now](#)

Preparing for Adulthood Professionals Workshop

A webinar workshop, exploring how professionals can support neurodivergent young people as they prepare for adulthood. Part of our "Preparing for the Future" project to support young people 11+ awaiting an autism or learning disability assessment.

Tuesday 10th June – 3.30pm – 5.30pm

[Click here to register](#)



Seeking Crisis Support?

ADDvanced Solutions Community Network is not a crisis service. If you, a child or young person is experiencing acute distress and is deemed to be a risk to themselves or others, please see our **[urgent support page](#)**.

The details we request when you register are kept securely and used in line with our privacy policy: **<https://www.advancedsolutions.co.uk/wp-content/uploads/2025/04/Privacy-Policy.pdf>**

www.advancedsolutions.co.uk **01744 582172** **info@advancedsolutions.co.uk**

Get in touch with us

