

# What's on in St Helens

Summer 2 Half Term 2025



**ADDvanced Solutions**  
Community Network  
Supporting you to find the answers



## ADDvanced Solutions Community Network

is an open access offer that supports the emotional health and wellbeing of neurodivergent children and young people, their families and the professionals that work with them. Below you will find the learning programmes and workshops for St Helens families. No diagnosis or referral is needed to access the offer.



**Learning  
Programmes**  
page 3 & 4

[Find out more](#)



**Community  
Network Groups**

[See below](#)



**Online Learning  
Opportunities**  
page 2

[Find out more](#)

## St Helens Community Network Group: Every Tuesday afternoon during term time

An informal, open access learning opportunity to seek advice and support around challenges at all stages of your journey. No need to book, just come along, to meet the team and visiting professionals.

**Time: 12:30pm – 2:30pm**

**Venue: Wonderland Community Centre**

Unit 4 Reflection Court, Canal Street. WA10 3JQ.

The community centre is a 10 minute walk from St Helens Central train station and St Helens bus station. It is located opposite the Chapel House car showroom.

[Get directions](#)



### Topics this half term:

<b>Tuesday 3<sup>rd</sup> June</b>	<b>Managing Stress</b>
<b>Tuesday 10<sup>th</sup> June</b>	<b>Supporting Transition</b>
<b>Tuesday 17<sup>th</sup> June</b>	<b>SEND Jargon Buster</b>
<b>Tuesday 24<sup>th</sup> June</b>	in partnership with <b>Signs of a Rainbow</b>
<b>Tuesday 1<sup>st</sup> July</b>	<b>Sensory Processing Difficulties</b>
<b>Tuesday 8<sup>th</sup> July</b>	<b>Preparing for the Summer Holidays</b>

## Online Learning Opportunities



We offer several opportunities for parents and carers to access our offer online if this is your preference. Weekly Community Network Groups, termly workshops and also our Learning Programmes are delivered in a webinar format via Zoom for Healthcare. Please register in advance to attend.



[View our online calendar here or via the QR code](#)

### ONLINE COMMUNITY NETWORK GROUP

#### Monday mornings

9.30am – 11.00am

[Click here to register](#)

<b>Monday 2<sup>nd</sup> June</b>	<b>Signs of a Rainbow</b> joining us to share the support they can offer families.
<b>Monday 9<sup>th</sup> June</b>	<b>Autism and Girls</b>
<b>Monday 16<sup>th</sup> June</b>	<b>Supporting Transition</b>
<b>Monday 23<sup>rd</sup> June</b>	<b>Tantrums vs Meltdowns</b>
<b>Monday 30<sup>th</sup> June</b>	<b>Understanding Phobias</b>
<b>Monday 7<sup>th</sup> July</b>	<b>Preparing for Summer Holidays</b>

### ONLINE COMMUNITY NETWORK GROUP

#### Wednesday evenings

5.00pm – 6.30pm

[Click here to register](#)

<b>Wednesday 4<sup>th</sup> June</b>	<b>Supporting Transition</b>
<b>Wednesday 11<sup>th</sup> June</b>	<b>Understanding and Supporting Behaviours that Challenge</b>
<b>Wednesday 18<sup>th</sup> June</b>	<b>Neurodiversity and Mental Health</b>
<b>Wednesday 25<sup>th</sup> June</b>	<b>Supporting Organisational Skills</b>
<b>Wednesday 2<sup>nd</sup> July</b>	<b>Signs of a Rainbow</b> joining us to share the support they can offer families.
<b>Wednesday 9<sup>th</sup> July</b>	<b>Preparing for Summer Holidays</b>

## Online 'Demand Avoidance' Workshop

An extended webinar workshop, exploring Autism with a Demand Avoidant Profile and strategies to support autistic children and young people presenting with varying degrees of demand avoidance.

**Friday 6<sup>th</sup> June – 9.30am – 12.00pm**

[Click here to register](#)



## 'Preparing for the future' Online Workshop

### Pathway to inclusion and being part of own community

An extended webinar workshop, exploring how we can support neurodivergent young people to be included in the local community as they approach adulthood. Designed to compliment our Preparing for the future Learning Programme, see page 3)

**Tuesday 24<sup>th</sup> June – 6.30pm – 8.30pm**

[Click here to register](#)



Online community network groups and learning workshops provide parents and carers with an understanding of a particular topic around neurodevelopmental conditions. We provide strategies to support children and young people at home and in school, with an opportunity to interact with our team via the chat and Q&A function. If you are using a phone, you will need to download the Zoom app beforehand. Please be mindful of your data usage. If you do not have an unlimited data plan, you may need to connect to a Wi-Fi connection to prevent charges.



## Learning Programmes for St Helens parents and carers

We offer learning programmes in St Helens to support parents and carers to understand and meet the needs of their neurodivergent children and young people, pre, during and post diagnosis.

[View our online calendar here or via the QR code to find the latest available dates](#)



## Neurodevelopmental Conditions Learning Programme

This programme equips parents and carers with a greater understanding of neurodevelopmental conditions, specific learning difficulties and associated mental health needs and equips them with practical strategies that support the difficulties that may present, including:

- **Neurodevelopmental Conditions – including Autism, ADHD, Sensory Processing Difficulties, Specific Learning Difficulties.**
- **Managing everyday challenges and behaviours – including sleep, toileting and eating difficulties.**
- **Your Local Offer, disability welfare rights and SEND, Early Help and Education Health Care Plans.**

**No referral or diagnosis is needed**

**[Click here for latest dates to attend face to face or online](#)**

## Preparing for the Future Learning Programme

Offering parents and carers, in St Helens, Knowsley and Warrington, learning opportunities to understand and better support neurodivergent young people aged 11+ as they .

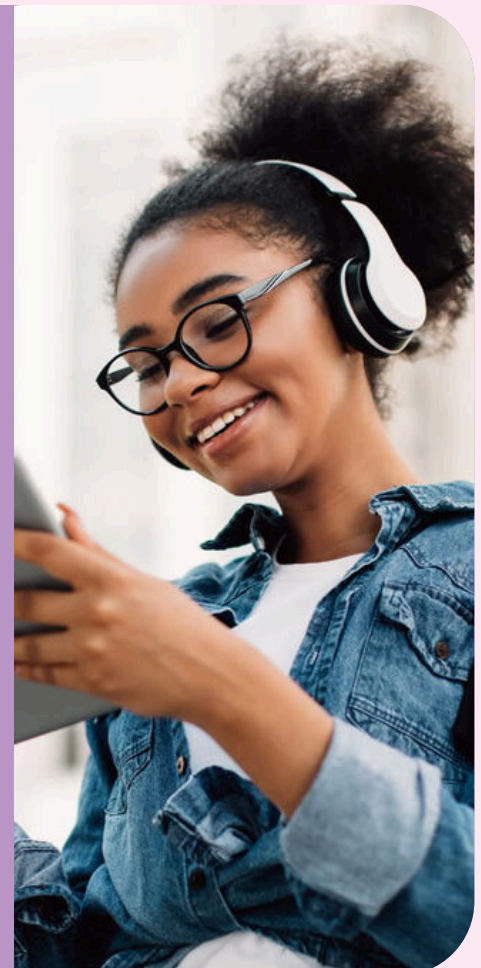
This is a structured, 6 session learning programme, delivered face to face or online, supporting parents and carers as their young person approaches adulthood:

- **Independent living**
- **Community inclusion**
- **Relationships**
- **Good health and wellbeing**
- **Exploring local provision and services for young people**
- **Planning for transition**
- **Supporting independence**
- **Reasonable adjustments and SEND**
- **Further education and employment**

### **Online – across 6 evening sessions via Zoom**

Wednesday 4<sup>th</sup> June 6.30pm – 8.30pm  
Monday 9<sup>th</sup> June 6.30pm – 8.30pm  
Wednesday 11<sup>th</sup> June 6.30pm – 8.30pm  
Monday 16<sup>th</sup> June 6.30pm – 8.30pm  
Wednesday 18<sup>th</sup> June 6.30pm – 8.30pm  
Monday 23<sup>rd</sup> June 6.30pm – 8.30pm

**[Book Now](#)**





## Autism Learning Programme

The Autism Learning Programme has been designed to support and empower parents and carers in their understanding of how autism is experienced by children and young people, providing learning, guidance and strategies to better support your child/young person. The programme is commissioned by NHS MerseyCare for St Helens parents and carers. Although priority will be given to parents and carers whose child has received an autism diagnosis, those on the pathway are also able to attend if places are available.

Across 3 Wednesdays – 9.30am – 2.45pm  
**4<sup>th</sup>, 11<sup>th</sup> and 18<sup>th</sup> June 2025**

**Please contact us to book your free place – venue to be confirmed.**

Call our office on **01744 582172**, email us on **[info@advancedsolutions.co.uk](mailto:info@advancedsolutions.co.uk)** or

**[Register here](#)**



## Professionals Neurodevelopmental Conditions Awareness Raising Training

**Wednesday 18<sup>th</sup> June – 9.15am – 4.00pm – St Helens – venue to be confirmed.**

Designed to improve professionals' understanding of neurodevelopmental conditions (NDCs), how they may present and how one condition may overlap with another. Professionals attending this training will develop knowledge, skills and confidence to better support neurodiverse children, young people and their families:

- **Understand the differences between and the typical behaviours of ADHD, Autism, and other NDCs**
- **Recognise the impact that unsupported and unmanaged NDCs can have on an individual and their family**
- **Understand the impact that sensory processing difficulties can have on children and young people**
- **Identify local support available for professionals, children, young people and their families.**

If you are interested in this full day's training, please call the office on **01744 582172** or email **[info@advancedsolutions.co.uk](mailto:info@advancedsolutions.co.uk)**.



## St Helens Schools – Professionals online training workshops

Free online training sessions for any staff of St Helens secondary schools, topics this half term is:

**Creating a Sensory Friendly Environment – Tuesday 24<sup>th</sup> June – 3.30pm – 5.30pm**

**[Book Now](#)**

## Preparing for Adulthood Professionals Workshop

A webinar workshop, exploring how professionals can support neurodivergent young people as they prepare for adulthood. Part of our "Preparing for the Future" project to support young people 11+ awaiting an autism or learning disability assessment.

**Tuesday 10<sup>th</sup> June – 3.30pm – 5.30pm**

**[Click here to register](#)**



### Seeking Crisis Support?

ADDvanced Solutions Community Network is not a crisis service. If you, a child or young person is experiencing acute distress and is deemed to be a risk to themselves or others, please see our **[urgent support page](#)**.

The details we request when you register are kept securely and used in line with our privacy policy: **<https://www.advancedsolutions.co.uk/wp-content/uploads/2025/04/Privacy-Policy.pdf>**

**[www.advancedsolutions.co.uk](http://www.advancedsolutions.co.uk)**   **01744 582172**   **[info@advancedsolutions.co.uk](mailto:info@advancedsolutions.co.uk)**

**Get in touch with us**

